

Community Governance Review Westbere and Hersden parish boundary

Matthew Archer, Head of Corporate Governance

April 2024

Community Governance Review



- A community governance review enables a principal council such as Canterbury City Council to review, implement, or make changes to community governance systems and structures.
- Examples include creating, merging, abolishing or changing parish or town councils in the review area.

Why now?

- Petition submitted to CCC by the Westbere Village Preservation Society calling for a community governance review (CGR)
- Petition asked for a boundary change to move the Bread and Cheese Field from the Hersden Parish Council to the Westbere Parish Council
- To trigger a review in an area the size of Westbere parish 37.5% of the electorate within the boundary must sign the petition
- The proposals must include a defined boundary as an option

Support for the petition

The threshold for an area with less than 500 electors to trigger a CGR is 37.5% (97).

- Electorate for Westbere **258**
- Signed by **118**
- Valid **97**
- Not valid **14** (outside area/not on register)
- Duplicates **7**

Petition wording (part 1)



Statement:

Westbere's historic connection with the Bread and Cheese Field was lost when the 2018 Parish Boundary review moved the field into the newly created Hersden Parish.

The Westbere Village Preservation Society and we the undersigned local residents request the following:

- 1. That Canterbury City Council undertake a boundary review in order to return the historic field to Westbere Parish.*
- 2. That the Bread & Cheese Field should be designated as a protected green space, especially in light of any proposed development that would lead to the coalescence of Westbere and Hersden and result in the loss of this historic landscape.*

Petition wording



This review is only considering the boundary review element

1. That Canterbury City Council undertake a boundary review in order to return the historic field to Westbere Parish.

~~*2. That the Bread & Cheese Field should be designated as a protected green space, especially in light of any proposed development that would lead to the coalescence of Westbere and Hersden and result in the loss of this historic landscape.*~~

Petition wording (part 2)

Justification

Westbere's historic relationship with the Bread and Cheese field started in 1701 when the Bread and Cheese charitable trust was set up to distribute income from leasing the field for farming purposes to the villagers. 300 years later this charity still functions albeit in a modest way providing support to parishioners in further education, training and apprenticeships. A celebration of its role in the community took place in 2001 in the Yew Tree Pub to mark 300 years of the charity.

The development of this field would remove any distinction between the settlements of Westbere and Hersden and have the cumulative effect of joining Westbere to the ribbon developments along the A28 at Hoplands and Chislet Colliery, thereby damaging the integrity of Westbere and Hersden as separate communities.

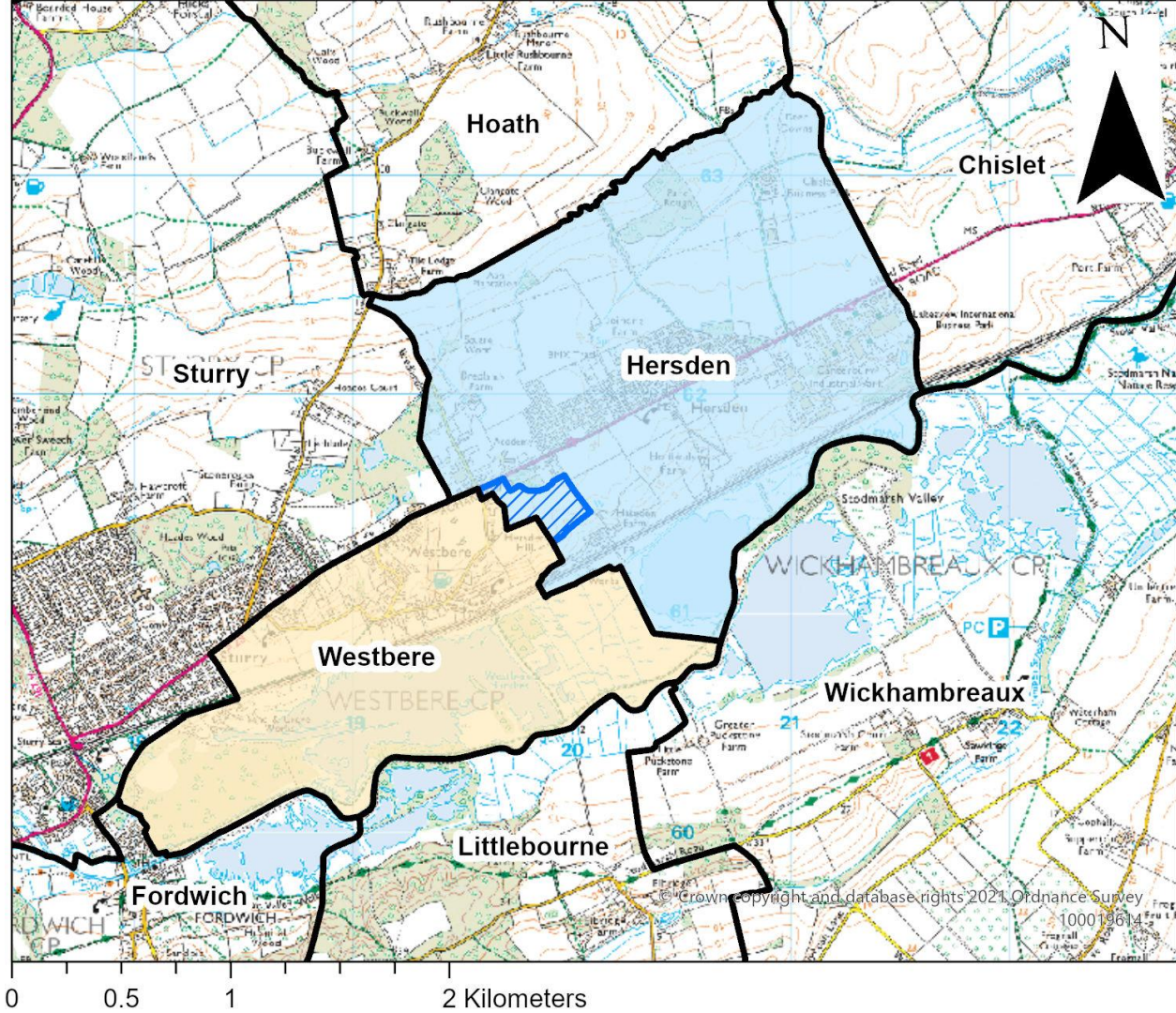
The Bread and Cheese Field - location



Existing parish boundary

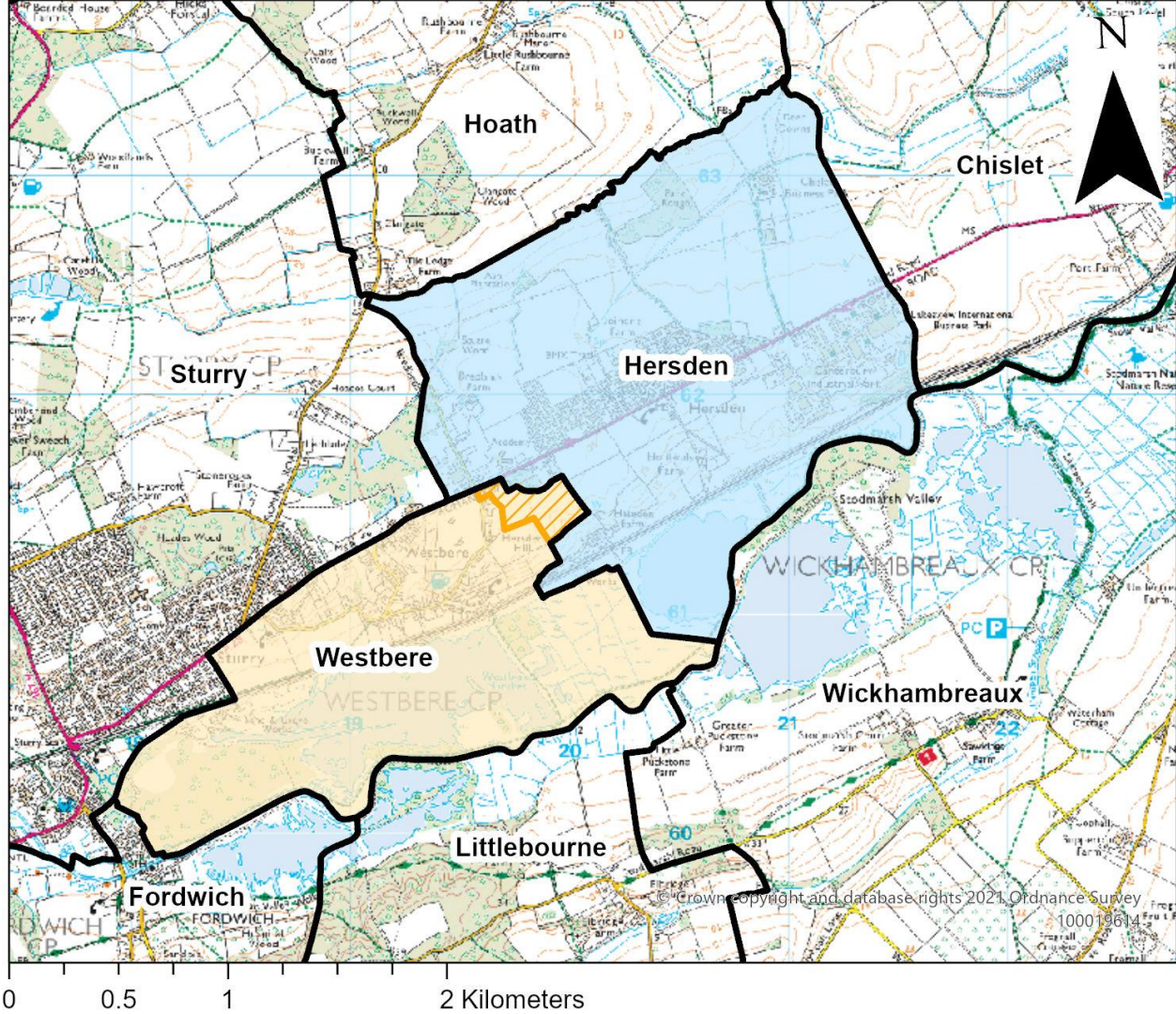
Established as part of the 2017/18 community governance review

Formed part of the newly established Hersden Parish Council on 1 April 2019.



Petition proposal

To move the Bread and Cheese Field from Hersden PC to Westbere PC



CGR requirements

Council's are responsible for undertaking CGR's*

A review can cover any part of the district -

- Creating, merging, altering or abolishing parishes
- Naming and style of new parishes
- Electoral arrangements
- Grouping parishes

*The Local Government and Public Involvement in Health Act 2007 (Part 4)

CGR assessment



The council is required to ensure community governance within the area under review will be -

- reflective of the identities and interests of the community in that area, and
- is effective and convenient.

In doing so the review is required to take into account of:

- the impact of community governance arrangements on community cohesion;
- the size, population and boundaries of a local community or parish.

CGR assessment



Points to consider

- Historic information
- What are residents telling us?
- Community cohesion
 - Is there a shared future vision and sense of belonging?
 - what might new and existing communities have in common?
 - Is this view reflective of whole community?
 - what impact might a change have on the identities of the community?
- Boundaries - typically based on natural communities or geographical features
- Effective and convenient governance - are there implications for existing or future governance?

How does this relate to the local plan?



To reiterate - the local plan consultation is a different process. You are encouraged to comment on both.

The B&C site was originally included as a draft site allocation for 150 homes within the Draft Canterbury District Local Plan to 2045 (Regulation 18) published for consultation in October 2022.

A revised Draft Local Plan was published for consultation in March 2024. The Bread and Cheese Field site is included in the [latest draft plan](#) (p119).

How does this relate to the local plan?



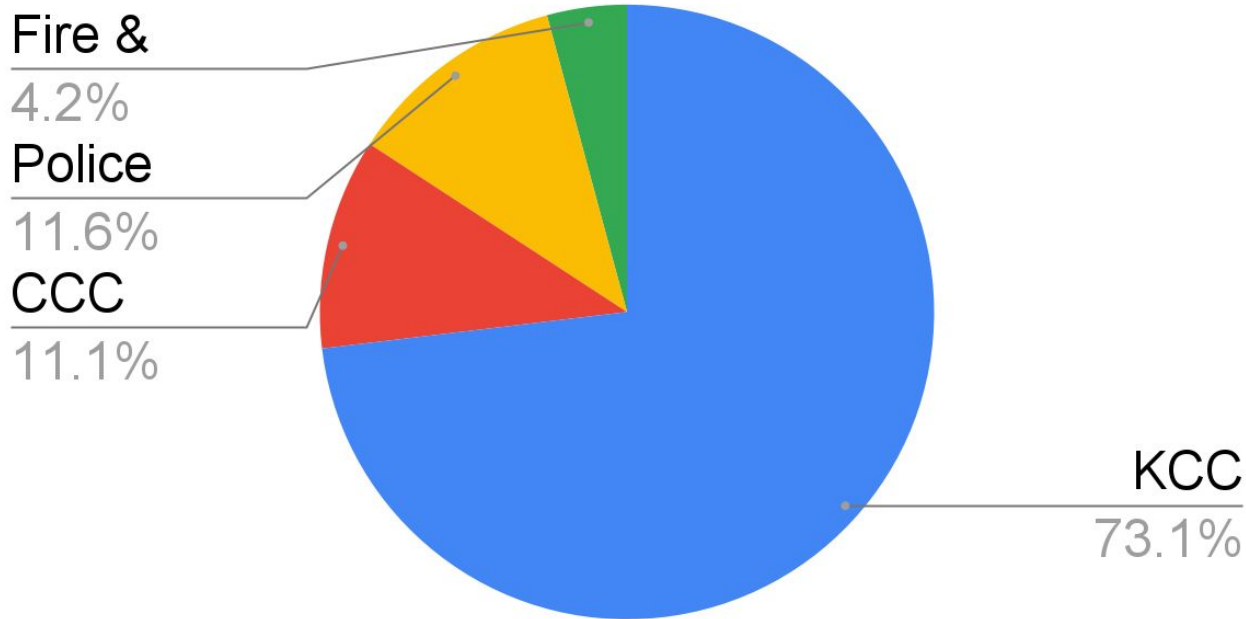
Open for consultation until Monday 3 June 2024,

<https://news.canterbury.gov.uk/latest-consultations/>

The CGR process is entirely separate to the draft Local Plan, which is developed under a different legislative framework.

How council tax is shared out

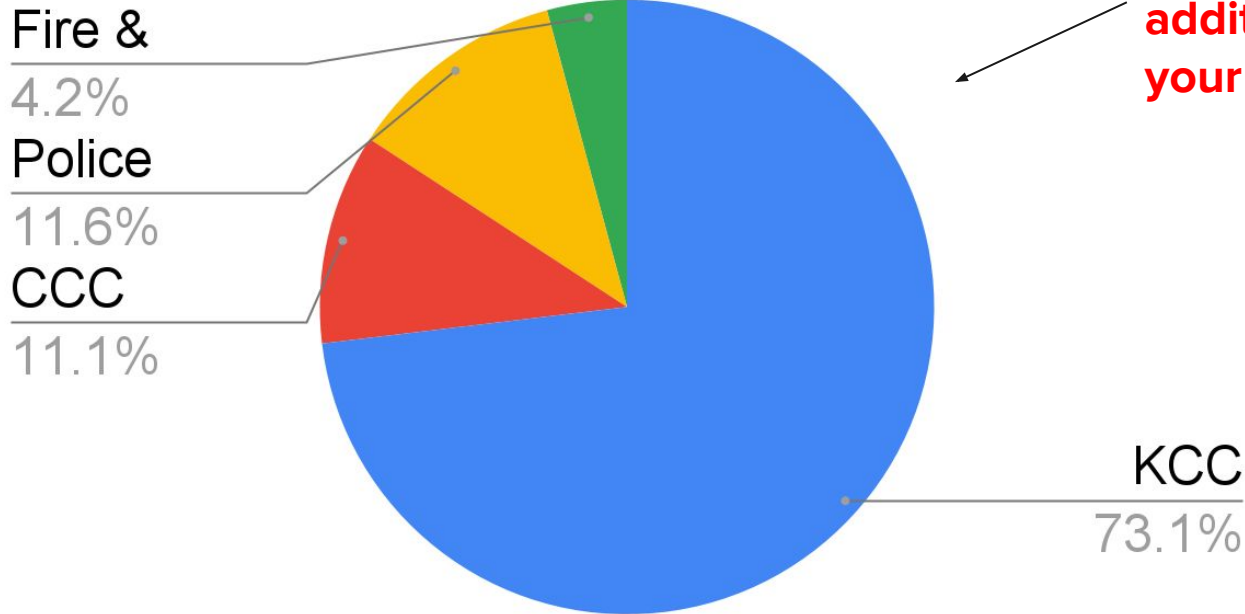
2023/24



How council tax is shared out



2023/24



Parish precept is an additional charge on your council tax

Impact on parish precept



Parish precept = the council tax contribution from residents living in the parish to fund their parish council

As it stands - none as there is no housing on the B&C site

If developed - the parish element of the council tax precept from any future housing on the site would go to the parish council.

Area	Tax base 24/25 (properties)	Precept 24/25 (income)	Band D 24/25 (amount paid)
Hersden	650.76	£39,119	£60.11
Westbere	145.76	£16,681	£114.44

Existing parish arrangements



27 parish councils

Parish Councils funded by additional precept

Urban areas unparished

Services delivered directly by the city council in urban areas - no additional precept

What CCC does...



Waste collection/street cleaning



Leisure facilities



Council housing



Planning and licensing



Parking Services



Whitstable Harbour

What KCC does...

- Education
- Social Services
- Health and social care
- Transport
- Roads and pavements
- Libraries
- Children and youth services



What a Parish Council does...



Small number of statutory services: Allotments

Wide ranging discretionary powers: to complement/enhance existing provision, such as:

- Bus shelters/community transport
- Community centres and play areas
- Crime reduction/community safety measures
- Celebrations
- Open spaces and public realm
- Street lighting
- Street cleaning

CGR consultation

- Open from 29 January - 20 May 2024 (12 weeks)
- Written to every household in Hersden and Westbere parishes
- Written to stakeholder groups and published [online](#)
- Public events:
 - 9 April in Westbere, Westbere Village Hall - 6.00pm
 - 15 April in Hersden, Chislet Colliery Welfare Club - 6.00pm
- CGR advisory group will consider the consultation feedback
- Report back to General Purposes Committee in Sept/Oct 2024
- Seek views on the consultation
- Final decision made by Full Council in October 2024/Jan 2025 (tbc)

Task and Finish Advisory Group



Role

To consider the consultation responses and make recommendations

Membership

Labour: Councillors Chris Cornell, Harry McKenzie and Naomi Smith

Liberal Democrat: Councillors Michael Dixey and Peter Old

Conservative: Councillors Rachel Carnac and Ian Stockley

Green: Councillor Clare Turnbull

Questions

Post:

Freepost RTHC–JJHK–ZUHH



Consultation and Engagement Team
Canterbury City Council
Council Offices
Military Road
CANTERBURY
CT1 1YW



Online:

www.canterbury.gov.uk/cgr